

March 2021
PUBLIC WORKS MONTHLY REPORT

EXCEPTIONAL

EMPLOYEES • SERVICES • COMMUNITY



ERLANGER

PUBLIC WORKS

- **Employee Spotlight**
 - **Ralph Sydnor**
- **Programs**
 - **Annual Mulching**
 - **Street Maintenance**
 - **Special Project**
- **Capital Improvement Projects**
 - **Street Improvements**
 - **Gateway Sign**
 - **Silverlake Park Renovation**
 - **Parking lot Resurfacing**
- **Training**

EMPLOYEE SPOTLIGHT

Ralph Sydnor

Ralph grew up in Latonia KY and attended Holmes High School. He started with the City Of Erlanger on July 1st 2001. Ralph does a plethora of jobs for the city one of which is keeping the city facilities clean and sanitized during this covid pandemic. He enjoys participating in all the city events from Touch a Truck to the Halloween Event. You can always count on Ralph to be there.

Ralph enjoys traveling, baseball and helping others. He says his favorite thing about working for the city are the friendships that he has developed and making people smile.



Ralph enjoys spending time with his family.

One place that he wants to visit is Hawaii so he can see a volcano.



PROGRAMS

Annual Playground Mulching

Crews have been working hard and taking advantage of the good weather by getting the playground mulch topped off around all the play equipment at all the parks for the upcoming park season. The crew utilized 189 man hours and 300 cubic yards of certified playground mulch at a cost of \$6,100.00 to complete the job.



PROGRAMS

Annual Tree and Bed Mulching

After the playground mulch was completed, the crews turned their attention to mulching beds and trees at the parks and right of ways. The crews used 200 cubic yards of premium black mulch at a cost of \$3,900.00 and 300 man hours to complete the job.

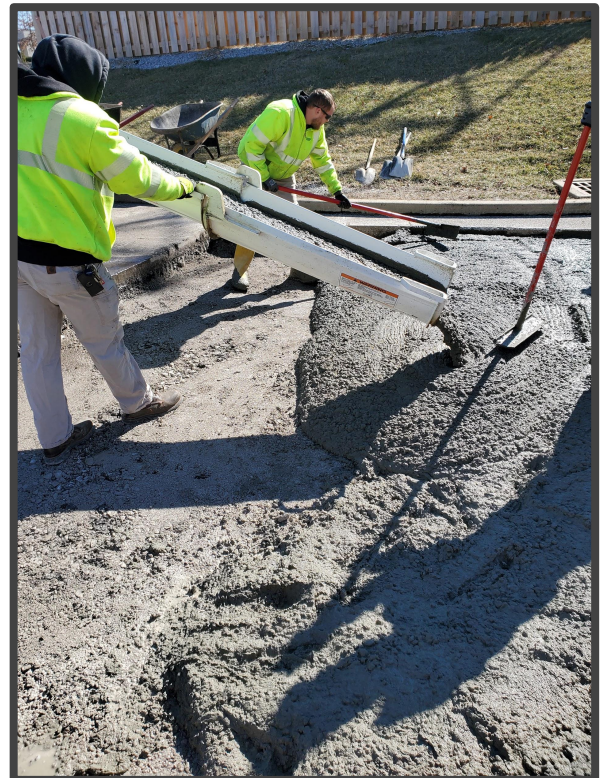
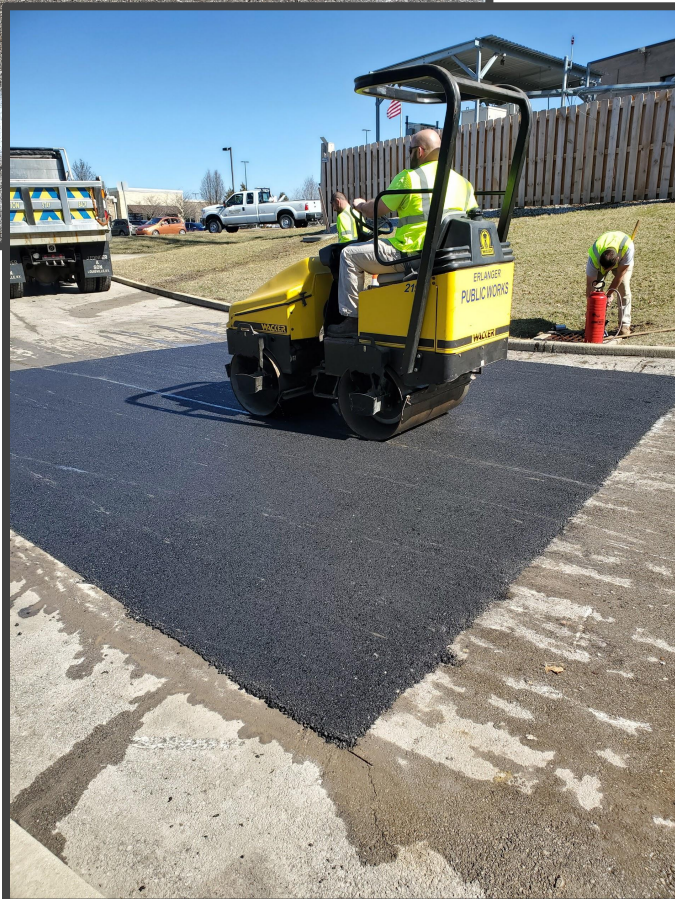
Contract mulching still to come and will be performed by A & A Lawncare at the City Building, Depot Park, Spring Valley Park, Firehouse 3 and Flagship Park.



PROGRAMS

Street Maintenance

Crews repaired a section of driveway that had a complete base failure on the back ramp of the main Firehouse on Graves Ave.



PROGRAMS

Street Maintenance

Pothole Patching

The team members from Public Works continue to combat those pesky potholes pretty much on a daily basis. With the harsh winter the area has seen and the constant freezing and thawing of water on the ground and with having to put the plow down and scrape the roads more this winter, the roads have taken a beating. The crews will continue to monitor the streets and take care of them when needed.



PROGRAMS

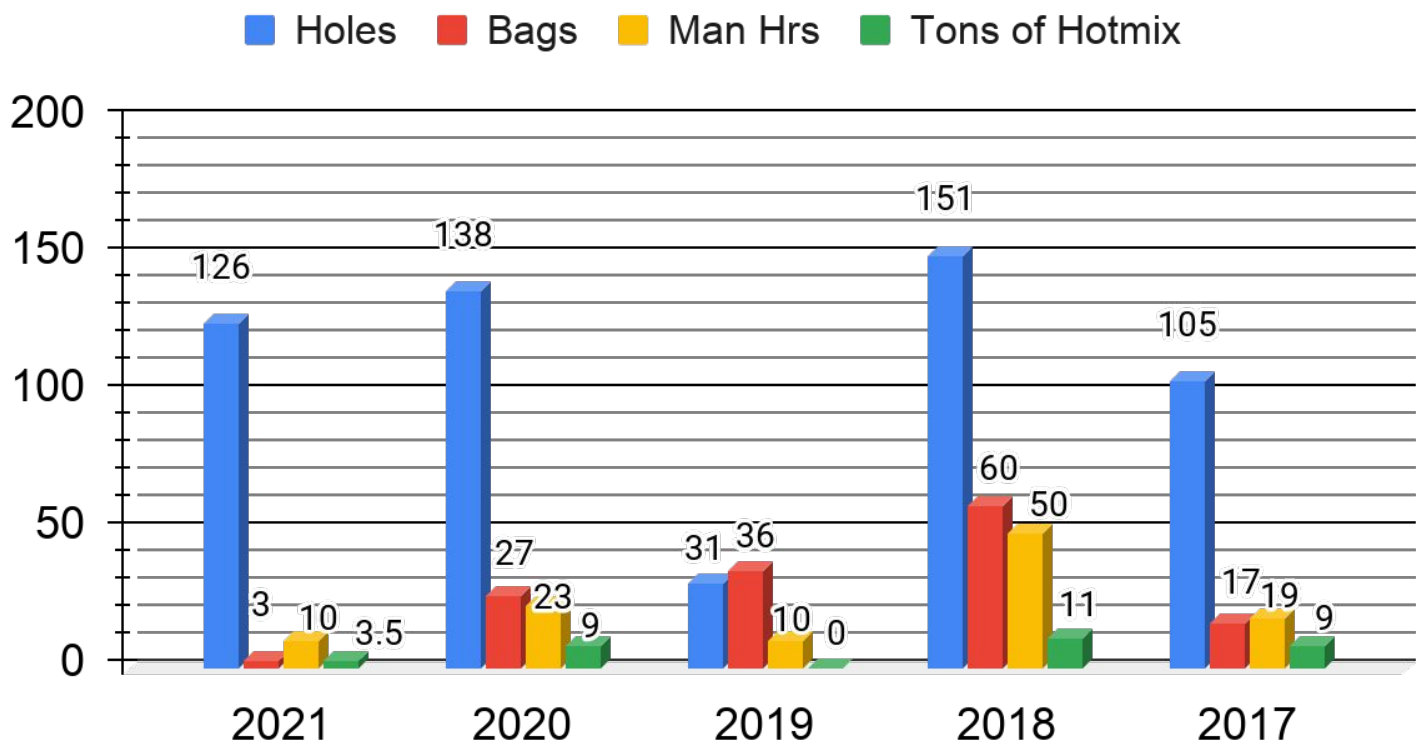
Street Maintenance

Pothole Patching

The chart shows a 5 year comparison of pothole patching in the month of March, the amount of material used and the man hours that it takes to fill potholes.

The bags of mix that the department uses is a 50 lb bag of high performance asphalt cold patch. So you can see that in 2017, the team used 63 bags of 50 lb cold patch which is equivalent to 1.5 tons of bulk mix.

March Pothole Patching 5 Yr Cycle



SPECIAL PROGRAM

Trash Pick up on Dolwick Dr.

The Public Works Team was tasked with picking up trash along Dolwick Drive from Crescent Springs Road to Turfway Road. The crew consisted of 8 team members and it took them 6 hours to do the job for a total of 48 man hours. The crew collected 55 bags of trash, over 20 tires and a full dump truck load of various sized wood. It was quite the undertaking but the team did an Exceptional job, as always.



CAPITAL IMPROVEMENT PROJECTS

The Public Works Department received bids on four projects during the month of March. The first being Rho Court and Terrace Drive (between Hallam Ave. and Timberlake Dr.) which will be complete removal and replacement of roadway.

| Contractor | Bid Amount |
|----------------------------|-------------------|
| Humphrey Concrete, LLC | \$159,262.00 |
| JPS Construction Inc. | \$159,875.00 |
| TMS Construction Inc. | \$169,425.00 |
| Jefferson Contracting, LLC | \$175,132.50 |
| Paul Michels & Sons Inc. | \$190,915.00 |

The second project is the Stevenson & Turkeyfoot Gateway Sign project.

| Contractor | Bid Amount |
|-------------------------|-------------------|
| Beaumont Building Group | \$37,010.50 |
| Radius Construction | \$41,621.95 |

The third project is the Silverlake Park Ph1 renovation.

| Contractor | Bid Amount |
|-------------------------|-------------------|
| Riegler Blacktop, Inc. | \$235,014.75 |
| Beaumont Building Group | \$255,042.64 |

CAPITAL IMPROVEMENT PROJECTS

The fourth project is the Parks Parking Lot Resurfacing project that will include Depot Park, Flagship Park and Spring Valley Park.

| Contractor | Bid Amount |
|------------------------------|-------------------|
| Michels Construction, Inc. | \$96,706.25 |
| Riegler Blacktop, Inc. | \$99,542.00 |
| Eaton Asphalt, Inc. | \$114,995.00 |
| Westside Paving & Excavation | \$116,844.45 |
| JK Meurer Corp. | \$127,507.91 |

The Public Works Department has been working with the City Engineer reviewing plans for the next projects to be bid which will include Lexington Drive and Sagebrush Lane. Both of these projects are street reconstructions projects.

Training

Team members will be attending virtual training classes being hosted by the University of Kentucky Transportation Center.

These classes are part of a program that will allow a team member who has taken the number of the required courses along with a number of optional courses to obtain a Road Scholar and/or a Road Master certification

Scheduled classes in April

Construction Inspector Class

This class teaches all aspects of construction and how to do inspection.

Developing Leadership Skills

This class explores situational leadership through group discussions and activities.

ACI Level 1 Concrete Class

This class will teach you the proper way to test concrete and understand the chemistry behind concrete.

Traffic Management Through Signs and Signals

This workshop will show examples of proper signs and markings, sign requirements, proper placement, warrants, sign supports and pavement markings.

Snow and Ice Removal

This workshop will show you how to safely and effectively remove snow and ice. It covers pre-trip inspection and maintenance of the truck, plow, and spreader. It also discusses vehicle operation as well as plowing and salting techniques. Finally, this course will help you to identify different snow conditions and solve some common snow and ice removal problems.