




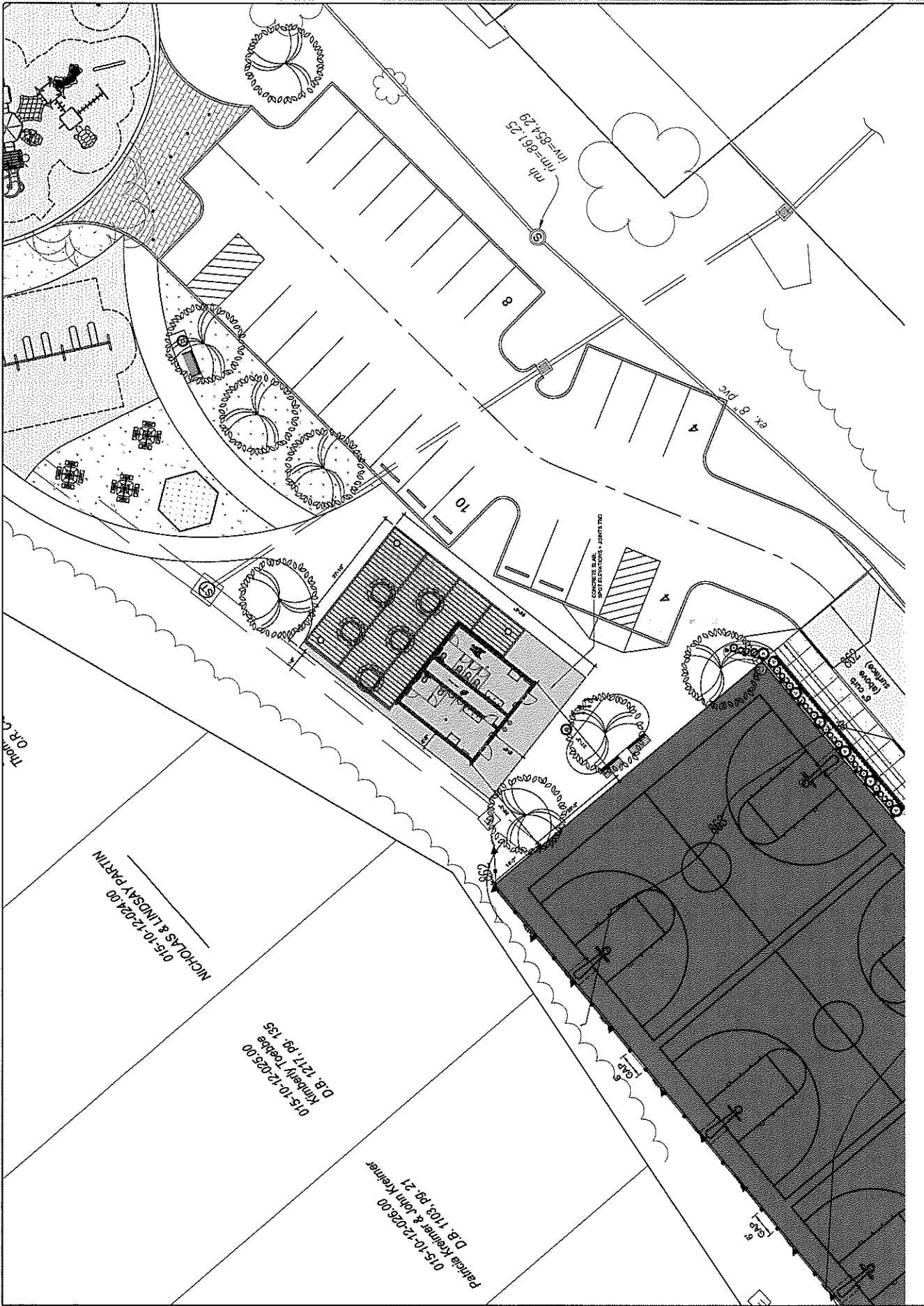


| NO. | DATE | BY | SCALE | DESCRIPTION       |
|-----|------|----|-------|-------------------|
| 1   |      |    |       | DESIGN WORK SHEET |


**VIOX & VIOX**  
 Civil Engineers, Surveyors, and Landscape Architects  
 405 E. High Street • Lexington, KY 40502  
 2120 Main Street • Erlanger, KY 40126  
 Phone: (606) 777-3229 • Fax: (606) 777-1000  
 www.viox.com

**SILVERLAKE PARK RESTROOM**  
 CONCEPT  
 ERLANGER, KY  
 SITE PLAN

|      |     |
|------|-----|
| DATE | NO. |
|      |     |
|      |     |
|      |     |









**SILVERLAKE BATHROOM SPECS.**

| QTY | ITEM   | DESCRIPTION                 |
|-----|--|-----------------------------|
|     | Vapor Tight Fixture, Dimmable No. 120V, For Bulb Type A23, For Max. Bulb Wattage 1150 W                        | PATIO LIGHT                 |
|     | Advances Tabco 19-FM-60FY 60" Wall Mount Multiwash Touchless Hand Sink w/ (3) Hand Sinks, Pedal Valve          | SINK                        |
|     | Wall Mount, Yes ADA, 2 Level Drinking Fountain MF #: 1EHWM17C  | DRINKING FOUNTAINS          |
|     | Acorn Toilet, Wall, Satin, Stainless Steel; 7165 Top Supply  | TOILETS                     |
|     | 6 MF #: R2105-T-1  |                             |
|     | Urinals - Handicap   | URINALS                     |
|     | 2 Urinal Fixtures; 180-11-35loom-Royal Exposed Urinal Flushometer - 1.5 GPF - fits 7165 TOP Supply             |                             |
|     | 2 urinal   | FLUSHING METERS FOR URINALS |
|     | Xlerator® Automatic Hand Dryer, Brushed Stainless Steel, 110-120V  | HAND DRYER                  |
|     | 4 Frost Wall Mount Mounted Soap Dispenser ASI® Royal™ Surface Mounted Toilet Seat Cover Dispenser - 6,20477-SM | SOAP DISPENSER              |
|     | Bohrick® ClassicSeries™ Surface Mounted Twin Jumbo Tissue Dispenser - B-6,2892                                 | SEAT COVER DISPENSER        |
|     |  | TOILET PAPER DISPENSERS     |

|  |                                       |
|--|---------------------------------------|
| Bohrick®<br>ClassicSeries™<br>Surface Mounted<br>Sanitary Disposal - B-4,270   | WOMENS SANITARY DISPOSAL              |
| Bohrick B-1652448<br>Commercial Restroom Mirror, Channel Frame; 2,28348  | BATHROOM MIRROR                       |
| ASI 0458 Waste Receptacle, Semi-Recessed   | WASTE RECEPTACLE                      |
| Foundations Surface Mount Stainless Changing Station Horizontal, Stainless Steel - 106SSC-SM   | BABY CHANGING STATION                 |
| FLOOR/WALL MOUNTED STAINLESS STEEL BATHROOM PARTITIONS   | BATHROOM PARTITION                    |
| 4 PARTITIONS ADA FLOOR/WALL MOUNTED STAINLESS STEEL BATHROOM PARTITIONS  | BATHROOM PARTITION                    |
| 2 PARTITIONS STAINLESS STEEL URINAL  | BATHROOM PARTITION                    |
| 2 PARTITIONS 18 in. x 24 in. x 36 in. and 42 in. x 1-1/4 in. Conesided Screw ADA Compliant Grab Bar Combo in Brushed 2 Stainless Steel                       | ADA HAND BAR KIT                      |
| 4" D STAINLES  | BATHROOM DRAIN                        |
| 2 DRAIN  | BATHROOM DRAIN                        |
| Eventus® Epoxy Flooring w/ 6" up interior bathroom walls; SKY BLUE   | BATHROOM FLOORING - 6" UP WALL SIDES  |
| 487 SF   |                                       |
| 4 FOOT LED DIRECT/INDIRECT SUSPENDED LINEAR FIXTURE, 65 WATT, 120-277V, CCT SELECTABLE, 2 BLACK  | HANGING BATHROOM INDOOR LIGHT FIXTURE |
| 30W Vandal / Impact Resistant Architectural Vapor Tight LED Light - 3' Long - 3,580 Lumens - 4600K - 2; Natural White 46" SuperSaver™ Table/ Round/ Portable | WALL MOUNTED INDOOR LIGHT FIXTURE     |
| 5 Blue   | ROUND TABLES                          |

NOTE: ALL ITEMS ARE SUBJECT TO CHANGE WITH AN APPROVED EQUIVALENT

| DATE | REVISION | BY | APP'D BY |
|------|----------|----|----------|
|      |          |    |          |
|      |          |    |          |
|      |          |    |          |
|      |          |    |          |
|      |          |    |          |
|      |          |    |          |
|      |          |    |          |
|      |          |    |          |
|      |          |    |          |
|      |          |    |          |

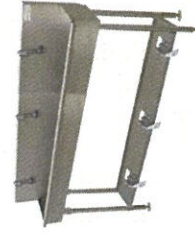
| DATE | REVISION | BY | APP'D BY |
|------|----------|----|----------|
|      |          |    |          |
|      |          |    |          |
|      |          |    |          |
|      |          |    |          |
|      |          |    |          |
|      |          |    |          |
|      |          |    |          |
|      |          |    |          |
|      |          |    |          |
|      |          |    |          |

**VOX & VOX**  
 Civil Engineers, Surveyors, and Landscape Architects  
 448 E. Main Street • Lexington, Kentucky 40508  
 2180 Main Street • Bowling Green, Ohio 43402  
 P: 606.338.1888 (606) 337-2323 • Fax: 606.338.1000  
 www.voxandvox.com

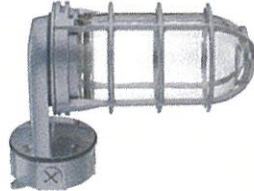


**SILVERLAKE PARK RESTROOM CONCEPT**  
 ERLANGER, KY  
 BATHROOM SPECS

| DATE | REVISION | BY | APP'D BY |
|------|----------|----|----------|
|      |          |    |          |
|      |          |    |          |
|      |          |    |          |
|      |          |    |          |
|      |          |    |          |
|      |          |    |          |
|      |          |    |          |
|      |          |    |          |
|      |          |    |          |
|      |          |    |          |



**STAINLESS STEEL SINK**



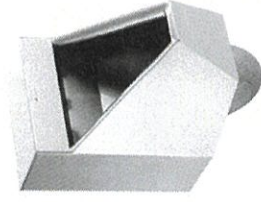
**STAINLESS OUTDOOR PATIO LIGHT FIXTURE**



**STAINLESS DRINKING FOUNTAIN**



**STAINLESS STEEL TOILET**



**STAINLESS STEEL URINAL**



**STAINLESS STEEL HAND DRYER**



**STAINLESS STEEL SOAP DISPENSER**



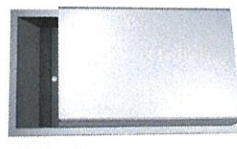
**STAINLESS SEAT COVER DISPENSER**



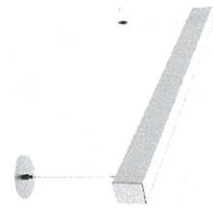
**STAINLESS STEEL TOILET PAPER DISP.**



**STAINLESS STEEL WOMENS SAN. DISP.**



**STAINLESS STEEL WASTE RECEPTACLE**



**STAINLESS STEEL HANGING LED LIGHT BAR**



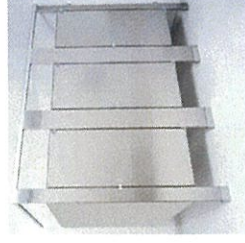
**STAINLESS STEEL WALL MOUNTED LIGHT BAR**



**EVERLAST EPOXY FLOORING; SKY BLUE**



**ROUND OUTDOOR SEATING**



**STAINLESS BATHROOM STALLS**




**STAINLESS STEEL BABY CHANGING STATION**

NOTE: ALL ITEMS ARE SUBJECT TO CHANGE WITH AN APPROVED EQUIVALENT; ITEMS ARE FOR DESIGN INTENT ONLY.

|             |   |                       |          |
|-------------|---|-----------------------|----------|
| DATE        | 1 | DESIGN MEETS WITH SET | REVISION |
| BY          |   |                       |          |
| CHECKED     |   |                       |          |
| DATE        |   |                       |          |
| APPROVED    |   |                       |          |
| DATE        |   |                       |          |
| SCALE       |   |                       |          |
| PROJECT NO. |   |                       |          |
| CLIENT      |   |                       |          |
| LOCATION    |   |                       |          |
| DESCRIPTION |   |                       |          |
| DRAWN BY    |   |                       |          |
| CHECKED BY  |   |                       |          |
| DATE        |   |                       |          |

© 2011 VOSS & VOSS, INC.



**VOSS & VOSS**  
Civil Engineers, Surveyors, and Landscape Architects  
468 Erlanger Road • Erlanger, Kentucky 41018  
2150 Main Street • Milford, Ohio 45150  
Ph: Erlanger (609)277-2023 • Ph: Milford (513)676-1000  
www.vvohinc.com

**SILVERLAKE PARK RESTROOM**  
**CONCEPT**  
ERLANGER, KY  
BATHROOM SPECS IMAGES

|         |           |
|---------|-----------|
| Sheet   | L-6       |
| Date    | 7/20/2011 |
| Checked | MM        |
| Drawn   | MM        |