



NORTHERN KENTUCKY SOLID WASTE RESOURCE GUIDE

A Publication of the Northern Kentucky Solid Waste Management Area

Boone • Campbell • Kenton

Northern Kentucky Solid Waste Management Area

Boone, Campbell, and Kenton Counties each have a Solid Waste Coordinator who oversees their County's solid waste programming, including recycling, litter abatement, household hazardous waste, and composting. The Solid Waste Coordinator (SWC) enforces their County's solid waste ordinances and handles issues regarding landfill, disposal, and illegal dumping. Additionally, the SWC provides community education and any available solid waste resources.

Boone, Campbell, and Kenton Counties together comprise of the Northern Kentucky Solid Waste Management Area (NKSWMMA). Please contact your local SWC for information on programs, special events, policies, and any additional questions on solid waste.

The Northern Kentucky Solid Waste Management Area is funded by the Fiscal Courts of Boone, Campbell, and Kenton Counties. The NKSWMMA is governed by the Judge Executives and one Commissioner of each county, as well as the Technical Advisory Committee. More information can be found online at www.boonecountyky.org/nkswmma.

Boone County
Judge Executive
Gary Moore

Campbell County
Judge Executive
Steve Pendery

Kenton County
Judge Executive
Kris Knochelmann

TABLE OF CONTENTS

Page 4	Important Contact Numbers	Page 11	Household Hazardous Waste (Cont.) CFL Bulbs & Fluorescent Tubes Cylinders & Tanks Gasoline Household Cleaners
Page 5	Waste Haulers, Landfills, & Transfer Stations Waste Haulers Landfills & Transfer Stations Report an Illegal Dump	Page 12	Household Hazardous Waste (Cont.) Latex & Oil Paint Pesticides & Fertilizers Prescription Drugs
Page 6	County Recycling Accepted Items Prohibited Items	Page 13	Household Hazardous Waste (Cont.) Needles Additional Hazardous Waste Household Hazardous Waste Collection Event
Page 7	County Recycling (Cont.) Getting Money for Your Recyclables Appliance Recycling Electronics Recycling Cell Phones	Page 14	Construction & Yard Waste Paper Shredding Packaging Materials Plastic Bags
Page 8	Electronics Recycling (Cont.) Ink/Toner Cartridges General Electronics “Hard-to-Recycle Items”	Page 15	Donating Unwanted Items
Page 9	Tire Disposal Vehicle Disposal Used Oil & Oil Filters	Page 16	Food Donations & Food Waste Food Donations Food Waste
Page 10	Household Hazardous Waste Aerosols Antifreeze Auto & Rechargeable Batteries Single-Use & Rechargeable Batteries	Page 17	Litter Cleanups Education

IMPORTANT CONTACT NUMBERS

County Solid Waste Management



BOONE COUNTY
KENTUCKY

**Boone County
Solid Waste Coordinator***

Jake Buerger
Solid Waste Services Supervisor
859-334-3629
wbuerger@boonecountyky.org
5645 Idlewild Road, Burlington

www.boonecountyky.org



CAMPBELL
COUNTY | KY

**Campbell County
Solid Waste Coordinator**

Megan Clere
Solid Waste Coordinator
859-547-1866
mclere@campbellcountyky.gov
1098 Monmouth Street, Newport

www.campbellcountyky.gov



KENTON
COUNTY

**Kenton County
Solid Waste Coordinator**

Melissa Grandstaff
Solid Waste Management Coordinator
859-392-1919
melissa.grandstaff@kentoncounty.org
420 Independence Station Road,
Independence

www.kentoncounty.org

**Serves as the NKSWMA Coordinator*

Conservation Districts

Boone County: 859-586-7903
Campbell County: 859-635-9587
Kenton County: 859-356-1019

Emergency Management (Hazard Mitigation)

Boone County: 859-334-2279
Campbell County: 859-635-1111
Kenton County: 859-392-1488

Kentucky Energy and Environmental Cabinet

Florence Regional Office
8020 Veterans Memorial Drive, Suite #110,
Florence
859-525-4923

Northern Kentucky Water District

2835 Crescent Springs Road, Erlanger
859-578-9898

Boone County Water District

2475 Burlington Pike, Burlington
859-586-6155

Public Works/Road Department

Boone County: 859-334-3600
Campbell County: 859-635-9100
Kenton County: 859-392-1920

Sanitation District No. 1 (SD1)

1045 Eaton Drive, Ft. Wright
859-578-7450
Opt. 1 for emergencies

UK Cooperative Extension Services

Boone County: 859-586-6101
Campbell County: 859-572-2600
Kenton County: 859-356-3155

WASTE HAULERS, LANDFILLS, & TRANSFER STATIONS

FIRST: If you live in a subdivision or planned neighborhood, find out if there is a Homeowners Association (HOA) for your community. Often, the HOA contracts a specific waste disposal hauler for their neighborhood(s).

SECOND: If you do not have an HOA and live in a city, contact your city. Cities usually manage waste disposal for incorporated areas. This may not be the case for unincorporated city areas.

THIRD: If you live in an unincorporated area and *not in a city*, you are free to contract any local waste disposal hauler that you prefer. It is a mandatory service. For larger items, you may dispose at a local landfill or transfer station for disposal for a fee. Contact your local SWC for information on landfill vouchers and cleanup events.

Waste Haulers

Best Way Disposal

*Curbside Trash & Recycling
Dumpster Rental*

1389 Production Drive, Burlington
859-372-4900

Republic Services

*Curbside Trash & Recycling
Dumpster Rental*

11563 Mosteller Road, Cincinnati
1-800-543-1339

Rumpke Waste & Recycling

*Curbside Trash & Recycling
Dumpster Rental*

3990 Generation Drive, Cincinnati
1-800-828-8171

Landfills & Transfer Stations

Bavarian Waste Landfill

12764 McCoys Fork Road, Walton
859-485-4416

Rumpke/Covington Transfer Station

4399 Boron Avenue, Covington
1-800-828-8171

Rumpke/Colerain Township Landfill

3800 Struble Road, Cincinnati
1-800-828-8171

Best Way/Boone County Transfer Station

1505 Resource Drive, Burlington
859-372-4900

Rumpke/Pendleton County Landfill

1374 Bryan Griffin Road, Butler
1-800-828-8171

Rumpke Recycling Facility

5535 Vine Street, Cincinnati
1-800-828-8171

Report an Illegal Dump

If you see a garbage pile or dumped items on someone's property, along right-of-ways, or in a public area, please contact your local SWC or Public Works Department immediately. If you see someone in the act of dumping, call 911. **Illegal dumping is a criminal offense – speak up!**

COUNTY RECYCLING

Big Blue Bins are located throughout Kenton and Boone Counties and Rumpke Recycling bins are located throughout Campbell County for 24/7 recycling. Visit your County's Solid Waste website (located on Page 4) to see what bin is closest to you.

Accepted Items

Big Blue Bins (Boone & Kenton):

PLASTIC BOTTLES & JUGS



GLASS BOTTLES & JARS



METAL CANS



MIXED PAPER



CARDBOARD



Rumpke Recycling (Campbell):

PAPER



PLASTICS

Bottles, jugs, tubs and cups



METAL CANS & CUPS



GLASS BOTTLES & JARS



CARTONS



**Please keep plastic bags, food, yard debris, electronics, furniture, flooring, wood, plastic foam, and hazardous materials out of the bins. They contaminate the recycling bin and can cause safety issues (ex: fires).*

Prohibited Items

PLASTIC PACKAGING



OTHER PLASTIC ITEMS



YARD DEBRIS



HAZARDOUS WASTE



ORGANICS



ELECTRONICS



**Dumping in and around recycling bins is illegal and will be assessed by the County SWC. Prohibited items can either be put into your trash, taken to a landfill/transfer station, or properly disposed of at a hazardous waste facility.*

Getting Money for Your Recyclables

The following companies offer money for **scrap metal and certain appliances**. Call ahead for pricing information.

Bluegrass Recycling
1575 Distribution Drive, Burlington
859-283-9560

Can Dew Recycling
1510 Russell Street, Covington
859-261-8264

Cohen Recycling
13229 Dixie Highway, Walton
859-363-8300
5038 Beech Street, Cincinnati
513-731-7222

Newport Recycling
534 W 12th Street, Newport
859-261-9335

Recycling Express
7430 Industrial Road, Florence
859-282-5200
8505 Dixie Highway, Florence
859-282-5206

River Metals Recycling
1220 Licking Pike, Newport
859-291-5509



APPLIANCE RECYCLING

Get rid of your broken-down appliances through Boone, Campbell, or Kenton County Solid Waste. Please remove ALL fluids and food before drop-off. Contact your SWC for more details. If you live within city limits, you may also contact your Public Services Department for additional methods.

Boone County Recycling Center
3275 Maplewood Drive, Burlington
859-334-3151

Monday – Friday
8:00am – 3:30pm

**Campbell County Road
Department**
1175 Racetrack Road, Alexandria
859-635-9100

Monday – Friday
7:00am – 3:30pm

Kenton County Public Works
420 Independence Station Road,
Independence
859-392-1920

Monday – Friday
8:00am – 3:30pm

\$25 fee for Freon drop-off

ELECTRONICS RECYCLING

Cell Phones

Many retailers will accept cell phones, including local cellular wireless stores, Best Buy, AltaFiber, Office Depot, Staples, Target, and even the Cincinnati Zoo. Please call each location for details. For battery-only disposal, see Single-Use & Rechargeable Batteries (located on Page 10). *Be sure to wipe your phone by removing the SIM card before recycling.*

Ink/Toner Cartridges

Most major office supply stores accept these items, including Best Buy, Office Depot, and Staples.

Boone County Public Works

5645 Idlewild Road, Burlington
859-334-3151

Kenton County Public Works

420 Independence Station Road, Independence
859-392-1920

Cincinnati Recycling & Reuse Hub

911 Evans Street, Cincinnati
513-629-9040

www.cincinnati recyclingandreusehub.com

Close the Loop

Business options
859-757-1115

www.closesthe-loopusa.com

General Electronics

Each location accepts different items – be sure to visit their website or contact them directly beforehand. *Proper disposal is not always free, please call ahead for pricing information.*

Best Buy

100 Meijer Drive, Florence
859-525-7118

www.bestbuy.com

Cincinnati Recycling & Reuse Hub

911 Evans Street, Cincinnati
513-629-9040

www.cincinnati recyclingandreusehub.com

Staples

Various locations

www.staples.com

Blair Technology Group

4314 Boron Drive, Suite D,
Covington
1-855-252-4784

www.blairtech.com

Cohen Recycling

13229 Dixie Highway, Walton
859-363-8300
5038 Beech Street, Cincinnati
513-731-7222

www.cohenusa.com

Tri State Escrap

6001 Dry Fork Road, Cleves
513-240-2521

www.tristateescrap.com

Cleanlites Recycling

7806 Anthony Wayne Avenue,
Cincinnati
1-800-778-6645

www.cleanlites.com

Environmental Enterprises

4650 Spring Grove Avenue, Cincinnati
1-800-722-2818

www.eeienv.com

USA Green PC

61 Jolly Industrial Park Drive,
Wilder
859-314-9360

www.usagreenpc.com

***All electronics can be brought and disposed of for free to the Household Hazardous Waste Collection Event, typically held the first Saturday in November. Visit www.nkyhww.org for more details or contact your SWC.*

“HARD-TO-RECYCLE” ITEMS

Some items like beauty packaging, pens, k-cups, toothbrushes, chip bags, razor blades, animal feed bags, and solo cups are hard to recycle in most local recycling programs.

Cincinnati Recycling & Reuse Hub

911 Evans Street, Cincinnati
513-629-9040

www.cincinnati recyclingandreusehub.com

TerraCycle

www.terracycle.com

Mail-in programs and zero waste boxes

TIRE DISPOSAL

Landfills and Transfer Stations (located on Page 5) will accept tires for a fee. **Every three years, Kentucky Division of Waste Management will host free Waste Tire Collection Events in the Northern Kentucky area** – contact your local SWC for more details. Additionally, most tire detailers will accept tires for a fee.

Cincinnati Recycling & Reuse Hub
911 Evans Street, Cincinnati
513-629-9040
www.cincinnati recycling and reuse hub.com



VEHICLE DISPOSAL

Cohen Recycling
13229 Dixie Highway, Walton
859-363-8300
5038 Beech Street, Cincinnati
513-731-7222

Goodwill
Various locations
www.goodwillcars.com

Union Auto Parts
1354 Frogtown Road, Union
859-384-3381

The Salvation Army
Various locations
www.satruck.org/vehicle/create



USED OIL & OIL FILTERS

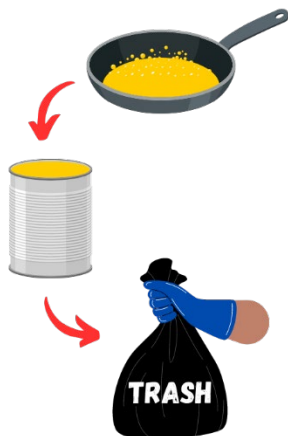
Certain auto parts stores will accept used oil – please call the individual stores for more details.

Boone County Public Works
5645 Idlewild Road, Burlington
859-334-3600

Accepts used motor oil up to five gallons and oil filters

Universal Environmental Services
7550 Empire Drive, Florence
859-647-9192

Accepts used motor oil, cooking oil, and oil filters



Cooking oils should not be dumped down your drain. Oil particles clump together and form large clogs over time. You can solidify your used oils and toss them in your regular trash. Visit www.sd1.org for more information on the Fats, Oils, & Grease (FOG) Program.

***Used oil can be brought and disposed of for free at the Household Hazardous Waste Collection Event, typically held the first Saturday in November. Visit www.nkyhhw.org for more details or contact your local SWC.*

HOUSEHOLD HAZARDOUS WASTE

Household hazardous waste is the group of materials that are commonly found in homes but actually require special attention when being discarded. *Keep in mind, the best disposal method is to use up the item as it is intended until it is empty.* **Please note that most organizations charge for disposal.**

Aerosols

Aerosols that are completely empty can be recycled if the top sprayer part is pulled off. If not empty, the contaminants are hazardous and need to be disposed of properly.

Cleanlites Recycling

7806 Anthony Wayne Avenue,
Cincinnati
1-800-778-6645

Environmental Enterprises

4650 Spring Grove Avenue,
Cincinnati
1-800-722-2818

Midwest Environmental Enterprises

27 Kiesland Court, Hamilton
513-681-9990

Antifreeze

Universal Environmental Services

7550 Empire Drive, Florence
859-547-9192

Environmental Enterprises

4650 Spring Grove Avenue,
Cincinnati
1-800-722-2818

Auto & Rechargeable Batteries

Most stores that sell auto batteries offer disposal. Lead-acid batteries are toxic and should not go to the landfill. See General Electronics (located on Page 8) for additional disposal methods.

Boone County Recycling Center

3275 Maplewood Drive, Burlington
859-334-3151

Kenton County Public Works

420 Independence Station Road, Independence
859-392-1920

***If you live within city limits, contact your Public Services Department for additional methods.*

Single-Use & Rechargeable Batteries

Single-use alkaline batteries (AA, AAA, 9V, D) are generally OK to put in your household trash. For more protection, tape the ends with Scotch tape or place in a plastic bag. **Lithium-ion batteries (typically in electronics, including e-cigarettes) should never go in your household trash and should be properly disposed,** as they will explode and cause fires. See General Electronics (located on Page 8) for additional disposal methods.

Cincinnati Recycling & Reuse Hub

911 Evans Street, Cincinnati
513-629-9040

www.cincinnati recycling and reuse hub.com

Compact Fluorescent Light (CFL) Bulbs & Fluorescent Tubes

See General Electronics (located on Page 8) for additional disposal methods.

Universal Environmental Services

7550 Empire Drive, Florence
859-647-9192

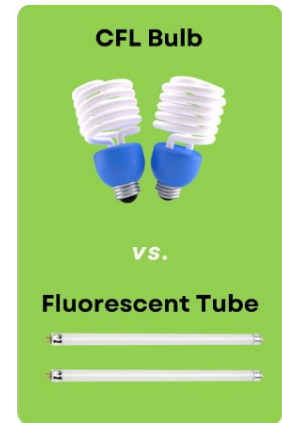
Environmental Enterprises

4650 Spring Grove Avenue, Cincinnati
1-800-722-2818

Cincinnati Recycling & Reuse Hub

911 Evans Street, Cincinnati
513-629-9040

www.cincinnati recyclingandreusehub.com



Cylinders & Tanks

Cylinders and tanks include fire extinguishers, propane tanks, helium tanks, and more. Certain tanks can be exchanged in cylinder exchange programs, like Blue Rhino. Call ahead for more information.

Blue Rhino

Various locations

www.bluerhino.com/propane-info/how-to-exchange

Environmental Enterprises

4650 Spring Grove Avenue, Cincinnati
1-800-722-2818 / 513-541-1823

Gasoline

Boone County Public Works

5645 Idlewild Road, Burlington
859-334-3600

Community Car Care

1047 Perkins Drive, Alexandria
859-635-1788

Environmental Enterprises

4650 Spring Grove Avenue,
Cincinnati
1-800-722-2818

Household Cleaners

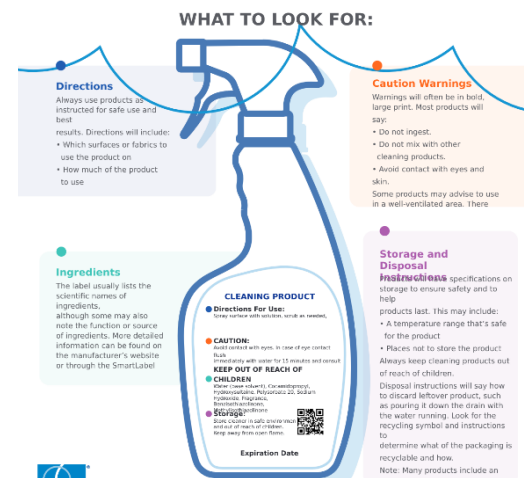
Check the label before disposal. If water-soluble and OK to flush down the drain, do so. If still usable and not mixed, consider donating (located on Page 15).

NEVER mix cleaners, as they can and will produce toxic gases.



Source: American Cleaning Institute

How to Read a Cleaning Product Label



american cleaning institute
www.cleaninginstitute.org



Latex & Oil Paint

Certain paint will last up to 20 years and can be donated to organizations. **Latex paint (including paint thinner) is not considered hazardous** and can be dried out to put in household trash. For large amounts, mix in paint hardener, cat litter, concrete mix, or something similar. **Oil paint contains toxic chemicals** and should be properly disposed of.

Cleanlites Recycling

7806 Anthony Wayne Avenue, Cincinnati
1-800-778-6645

Matthew 25 Ministries

11060 Kenwood Road, Blue Ash
513-793-6256

Latex paint donations

Environmental Enterprises

4650 Spring Grove Avenue, Cincinnati
1-800-722-2818

Midwest Environmental Services

27 Kiesland Court, Hamilton
513-681-9990

Pesticides & Fertilizers

Pesticides should never go down the drain or in a landfill, as their residues can cause serious harm. If able, use them up before disposing. *The Kentucky Department of Agriculture hosts a free pesticide collection for farmers.*

Kentucky Department of Agriculture

Office for Consumer & Environmental Protection
Program
502-573-0282
www.kyagr.com/consumer

Environmental Enterprises

4650 Spring Grove Avenue, Cincinnati
1-800-722-2818

Prescription Drugs

Certain medications should never be flushed, as it can affect local soil and water. There are two ways to dispose of expired medication:

1. **Drug disposal pouches:** This specialized pouch de-activates medication and are available at the Northern Kentucky Health Department. Visit www.nkyhealth.org for more information.
2. **Medication drop-boxes:** Most sheriff and police departments have medication drop-boxes for unneeded or expired medications. *They will not accept liquid medication, vitamins, supplements, needles, asthma inhalers, mercury thermometers, iodine-containing medication, or illegal drugs/substances (including marijuana).*
3. **DEA's National Prescription Take Back Day:** The Drug Enforcement Administration (DEA) offers Take Back Days throughout the year. Visit www.dea.gov/takebackday for more information. *Vaping devices are accepted at this event, but lithium-ion batteries must be removed first.*



Needles

Place used needles in either a Sharps container (provided by most pharmacies) or a rigid plastic #2 laundry detergent bottle, duct tape the lid shut, and dispose with household trash. **Sheriff and police departments will not accept needles.**



Stericycle
Sharps Mailback Program
1-855-703-1916
www.stericycle.com

Additional Hazardous Waste

If you have something not already mentioned in this guide, reach out to your local SWC or contact the organizations below for assistance.

Cleanlites Recycling
7806 Anthony Wayne Avenue,
Cincinnati
1-800-778-6645

Environmental Enterprises
4650 Spring Grove Avenue,
Cincinnati
1-800-722-2818

Midwest Environmental Enterprises
27 Kiesland Court, Hamilton
513-681-9990



Household Hazardous Waste Collection Event

The Northern Kentucky Household Hazardous Waste Action Coalition is dedicated to spreading awareness of the proper disposal and recycling of household hazardous waste.

The **Household Hazardous Waste (HHW) Collection Event** is typically the first Saturday of November each year, located at the Thomas More Stadium (Home of the Florence Y'alls) in Florence. The HHW Collection is FREE for Boone, Campbell, and Kenton County Residents. There are certain limitations and guidelines. More information can be found at www.nkyhww.org or by contacting your local SWC.

Accepted items: aerosol cans, antifreeze, batteries (all types), corrosives/flammables, electronics, ink/toner cartridges, light bulbs, oil, paint (10 can limit), pesticides, tanks/cylinders, and TVs (limit of two).

Prohibited items: appliances, fertilizers, mercury-containing devices, medications, tires, or paper.

CONSTRUCTION & YARD WASTE

Construction waste can include concrete, steel, wood, asphalt, and more. Yard waste includes dirt branches, and tree debris. See Landfills and Transfer Stations (located on Page 5) for additional disposal methods.

Affordable Landscape Supplies

Yard waste

4346 Bullittsville Road, Burlington
859-903-0022

H. Hafner & Sons

Construction and yard waste

5445 Wooster Road, Cincinnati
513-321-1895

Newtown Fill Ltd.

Construction waste

7960 Main Street, Cincinnati
513-271-8540

Cincinnati ReUse Center

Reusable building materials

1530 Tremont Street, Cincinnati
513-921-0111

Habitat for Humanity ReStore

Gently-used building material

15 Donermeyer Drive, Bellevue
859-261-0456
8309 US-42, Florence
859-371-0038

Ohio Mulch

Yard waste

5519 North Bend Road, Burlington
859-586-1173

PAPER SHREDDING

Boone County Recycling Center

During certain events

3275 Maplewood Drive, Burlington
859-334-3151

Document Destruction

4511 Reading Road, #1229,
Cincinnati
513-772-1114

Shred-It

1-866-593-9280
www.shredit.com

Office Depot

Various locations

Staples

Various locations

PACKAGING MATERIALS

Packing peanuts and other expanded polystyrene (EPS) are among the most common sources of litter and are often mistaken as viable food by birds and fish. EPS can take thousands of years before breaking down. Other plastic materials, like bubble wrap and air pillows, can take hundreds of years.

Eco Development

EPS only

4219 US-42, Mason
513-336-0777

Cincinnati Recycling & Reuse Hub

911 Evans Street, Cincinnati
513-629-9040

www.cincinnati recycling and reuse hub.com

FedEx

Various locations

Grocery Stores

Plastic bags, bubble wrap, air pillows, etc.
Various locations

UPS

Various locations

Plastic Bags



Certain convenient, grocery, and retail stores have a barrel in the front of the store to recycle single-use plastic bags. These stores utilize companies like Novolex, How2Recycle, and Beyond the Bag (Closed Loop). Some stores include Kroger, Meijer, Dick's Sporting Goods, Walgreens, Walmart, Target, and Kohl's. **Next time you are going to the store, be sure to check out the recycling options in the front!**

DONATING UNWANTED ITEMS

There are many ways to get rid of unwanted items, some even paying you in the process. Unwanted items can include clothing and footwear, furniture, toys, household cleaners, and building material. By donating or selling your items, you are giving them a second life and diverting from landfills. Some ways include:

- Phone apps: Poshmark, ThredUP, Etsy, etc.
- Facebook Marketplace
- eBay
- Craig's List Cincinnati
- Yard sales
- Clothing donation bins
- Local secondhand stores and charity organizations

Secondhand stores and charity organizations are easy ways to get rid of items without the hassle of shipping.

Before donating or selling items at the organizations below, please be aware that each location has different item guidelines, most-needed items wishlists, drives, operating hours, and drop-off times.

More information can be found on their individual websites. Here are some local ones to the Tri-State:

Be Concerned

General household items
1100 Pike Street, Covington
Erlanger United Ministries
525 Graves Avenue, Erlanger
859-727-0300
www.beconcerned.org

Goodwill

General household items
Various locations
www.goodwill.org

Plato's Closet & Once Upon A Child

Gently-used clothing
7941 Mall Road, Florence
859-282-9800
www.platosclosetflorence.com
www.onceuponachild.com/locations

Brighton Center

General household items
Various locations
www.brightoncenter.com

Helping Hearts

General household items
7199 Turfway Road, Florence
www.helpingheartsnky.org

St. Vincent de Paul

General household items
Various locations
www.svdpnky.org

Emergency Shelter of NKY

General household items
436 W 13th Street, Covington
859-291-4555
www.emergencyshelternky.org

Northern Kentucky Community Action Commission

Collection drives
Various locations
859-581-6607
www.nkyfamilypromise.org

The Salvation Army

General household items
Various locations
www.satruck.org

Fairhaven Rescue Mission

General household items
260 Pike Street, Covington
859-491-1027
www.fairhavenmission.org

Master Provisions

Gently-used clothing, bed sheets, towels
7725 Foundation Drive, Florence
859-474-0467
www.masterprovisions.org

Vietnam Veterans of America

General household items
1-800-535-3834
www.vva.org

Family Promise NKY

General household items
336 W 9th Street, Newport
859-360-0905
www.nkyfamilypromise.org

Matthew 25 Ministries

General household items
11060 Kenwood Road, Cincinnati
513-793-6256
www.m25m.org

Welcome House

General household items
1132 Greenup Street, Covington
859-431-8717
www.welcomehousenky.org

FOOD DONATIONS & FOOD WASTE

Food Donations

Before donating items, please be aware that each location has different item wishlists, drives, operating hours, and drop-off times. More information can be found on their individual websites.

Be Concerned

General household items
1100 Pike Street, Covington
Erlanger United Ministries
525 Graves Avenue, Erlanger
859-727-0300
www.beconcerned.org

Brighton Center

General household items
Various locations
www.brightoncenter.com

Northern Kentucky Community Action Commission

Various locations
859-581-6607
www.nkyfamilypromise.org

Master Provisions

Gently-used clothing, bed sheets, towels
7725 Foundation Drive, Florence
859-474-0467
www.masterprovisions.org

Matthew 25 Ministries

General household items
11060 Kenwood Road, Cincinnati
513-793-6256
www.m25m.org

St. Vincent de Paul

General household items
Various locations
www.svdpnky.org

Welcome House

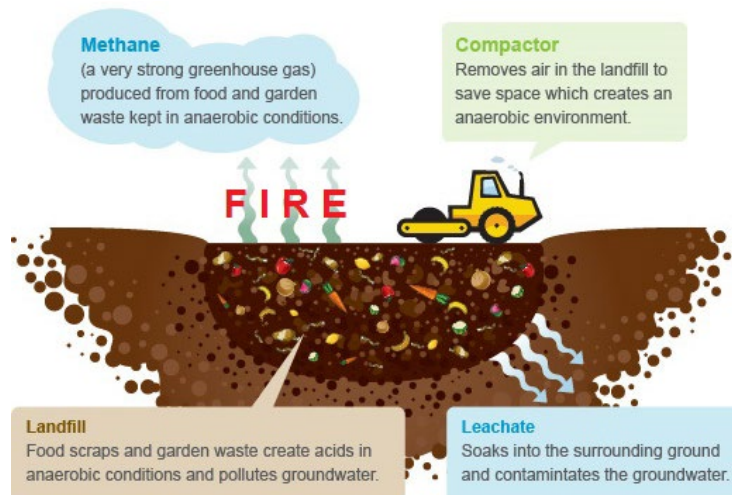
General household items
1132 Greenup Street, Covington
859-431-8717
www.welcomehousenky.org

Food Waste

Food waste that ends up in a landfill decomposes and releases carbon dioxide and methane. Methane is over 20x more potent than carbon dioxide and is considered to be a powerful greenhouse gas (GHG). To decrease this GHG, we can divert food waste and give it a new life: compost! Compost can easily be done in our own backyards and used for growing our own food or plants. Contact your local SWC for more information.

Residents in Campbell County are eligible to receive a free compost bin and educational information.

Contact the UK Campbell County Cooperative Extension Service (located on Page 4) for more information.



Source: MSW Plant

LITTER CLEANUPS



Litter is an unhealthy, harmful, and intolerable blight. It not only affects our quality of life, but also creates a negative impression of our community. It pollutes our land and water, and is detrimental to wildlife. Litter is also expensive to remove – Kentucky spends millions of dollars each year cleanup up roadways. **Littering is ILLEGAL!**

NKSWMA hosts litter cleanups and abatement programs to combat litter year-round. If you would like to learn more about how to get involved and stop litter in your community, contact your local SWC. Your SWC can work with you to plan a community litter cleanup for your neighborhood or business. **Join us for our Community Cleanups, Trash for Cash Cleanups, River Sweeps, and more!**

EDUCATION

Your SWC has a wealth of information to share with you! They are available to give presentations to schools, civic groups, churches, camps, and anyone else. Your SWC can discuss any subject related to solid waste, including recycling, composting, waste reduction, household hazardous waste, and litter. Please contact your local SWC if you are interested in any programs, wish to schedule a presentation, or need additional information.



BOONE COUNTY
KENTUCKY

Boone County
Solid Waste Coordinator

Jake Buerger
Solid Waste Services Supervisor
859-334-3629

wbuerger@boonecountky.org
5645 Idlewild Road, Burlington

www.boonecountky.org



CAMPBELL
COUNTY | KY

Campbell County
Solid Waste Coordinator

Megan Clere
Solid Waste Coordinator
859-547-1866

mclere@campbellcountky.gov
1098 Monmouth Street, Newport

www.campbellcountky.gov



KENTON
COUNTY

Kenton County
Solid Waste Coordinator

Melissa Grandstaff
Solid Waste Management Coordinator
859-392-1919

melissa.grandstaff@kentoncounty.org
420 Independence Station Road,
Independence

www.kentoncounty.org

The NKSWMA and this Resource Guide do not seek to endorse or promote any company. The listings are provided as a service to inform the public of proper disposal and recycling options. Anyone with suggestions, additions, or corrections, please contact your local SWC.