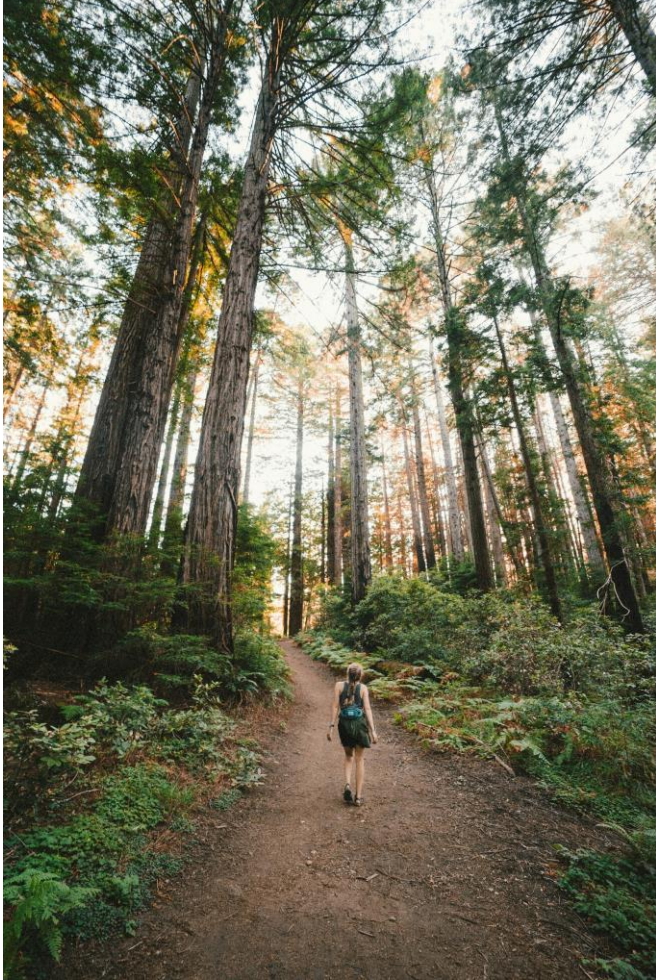


A photograph of a family walking away from the camera on a paved path through a forest. The scene is bathed in warm, golden light, likely from the setting or rising sun, creating a soft, hazy atmosphere. The trees are dense, and their leaves are illuminated, creating a bokeh effect. The family consists of an adult male in the center, a young girl to his left, and a smaller child to his right, all holding hands. The path leads into the distance, disappearing into the trees.

Erlanger Road Future Park Improvement Project

Presented by Mayor
Jessica Fette
City of Erlanger

Welcome and Acknowledgments



Welcome!

- **Special Welcome to Cherry Hill Residents and Guests**
- **Acknowledgments:**
 - Erlanger City Staff
 - Erlanger City Council Members
 - Boone County Officials and Representatives



Community-Centered Design

- **Resident Input:** Many features of the park are based on feedback from Cherry Hill residents, ensuring the park meets local needs and desires.
- **Improved Quality of Life:** The park will be a hub for community activities, fostering a stronger sense of community and providing recreational opportunities for all ages.



View at Creekbed looking North



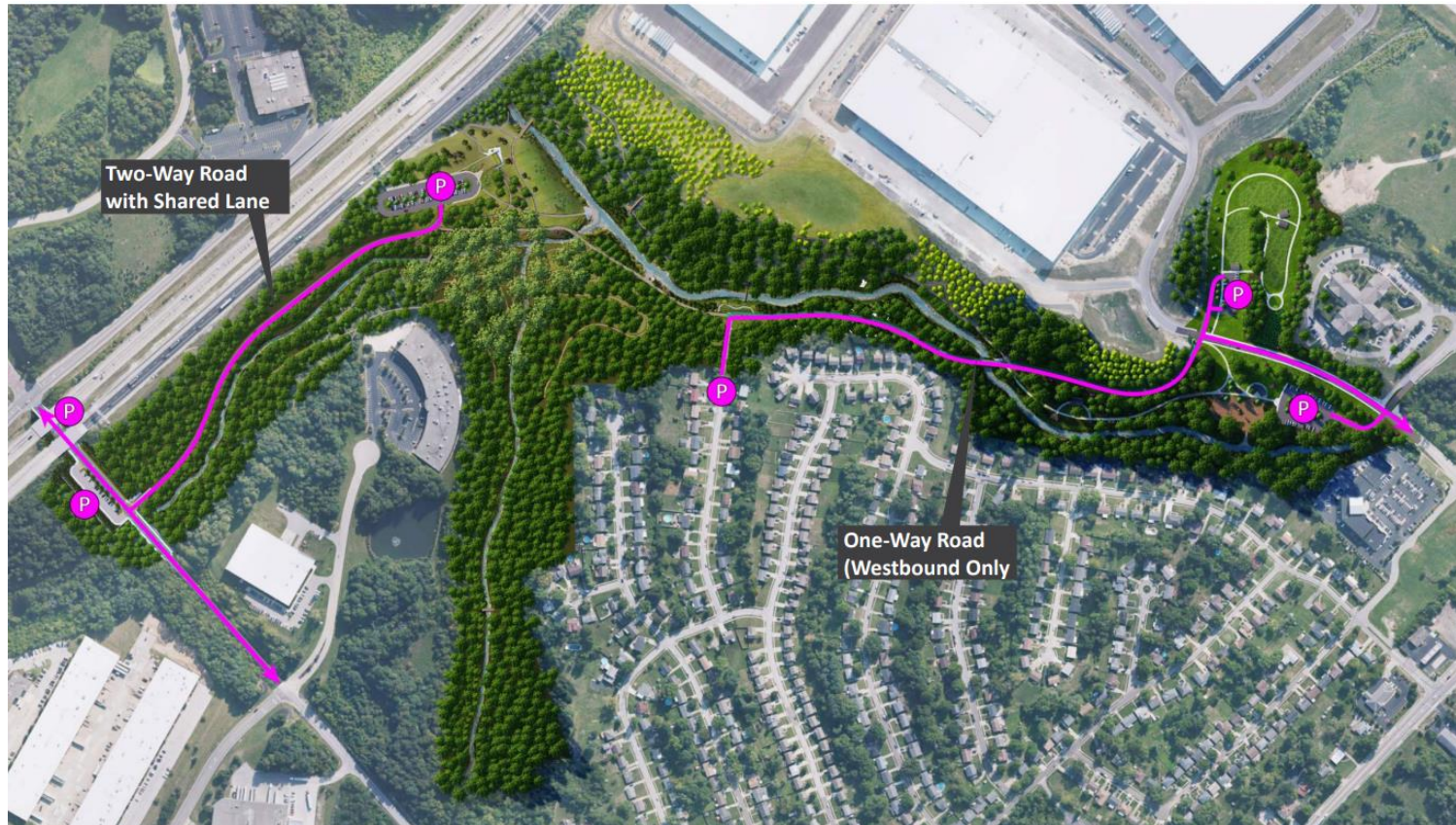
Visual - Park Overview

Visual Overview of the Project.



Traffic and Safety Improvements

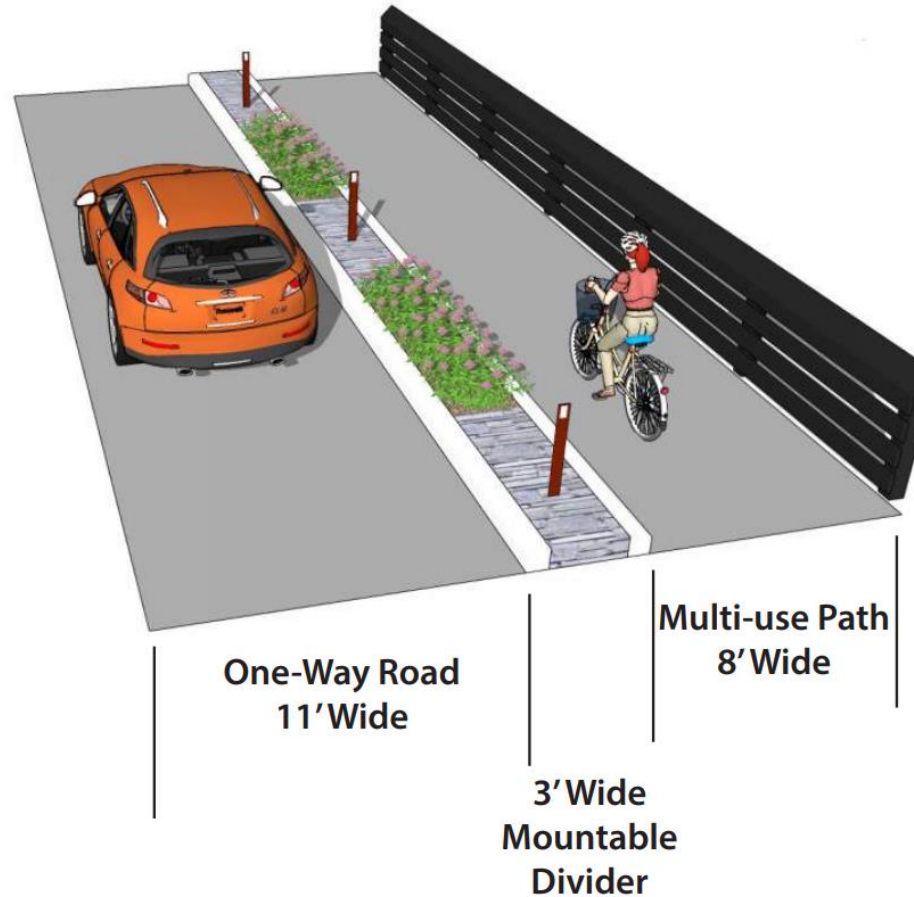
- **Reduction in Tractor-Trailer Traffic:**
 - Old Erlanger Road / New Sycamore Tree Lane will be designated as "one-way" exiting towards Houston Road.
 - This will prevent tractor trailers from entering the Cherry Hill Subdivision, reducing accidents, power outages, and congestion.



Pedestrian Walkway

- A new 4,900 linear ft. pedestrian walkway from Houston Road North to Turfway Road.
- Provides a safe, scenic route for walkers and cyclists.
- Further discourages heavy vehicle traffic.

Roadway Concept



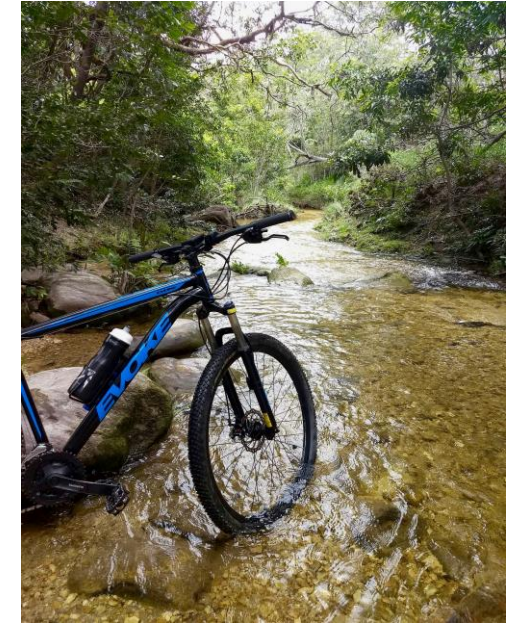
Park Features and Accessibility

- **Dog Park:** Located at the intersection of Houston Road North and Old Erlanger Road.
- **Additional Parking:** New parking areas to ensure easy access to the park.
- **I-275 Culvert Pipe Access:** Safe, accessible route for bicyclists and pedestrians to cross I-275.
- **Trailhead and Amenities:** New trailhead with parking and facilities at Turfway Road.



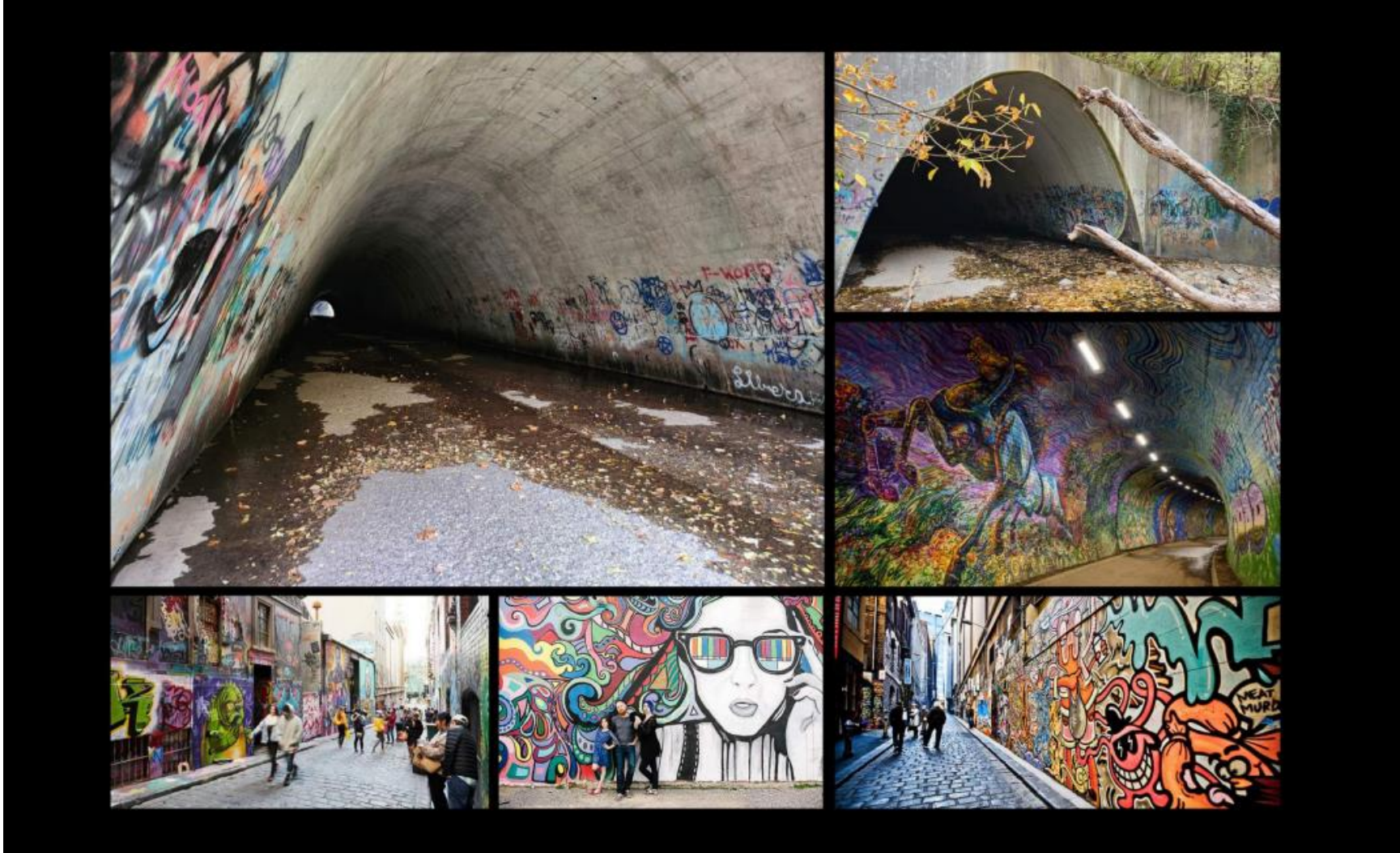
Future Phases

- **Mountain Bike Trails:** Providing new recreational opportunities for all ages by enhancing our natural spaces to foster a vibrant, active community.
- Collaborating with the Cincinnati Off Road Alliance (CORA) for initial build-out. CORA assisting with trail-planning, easements, and sustainable construction.



Future Phases

- **Underpass and Culvert:** Creating more accessible and safe routes for pedestrians and cyclists.



Future Phases

- **Underpass and Culvert:** Creating more accessible and safe routes for pedestrians and cyclists.



Future Phases

- **Canopy Trails:** Developing elevated walkways through tree canopies.



Closing Remarks

- . Thank you for your attention and participation.

- . We look forward to your continued input and support as we develop these exciting community projects.

